



Thermal Imaging at a Hospital Indicates the Need for Surgery... On the Electrical System

S&C Featured Solution: S&C's Power Systems Solutions

Location: Dallas/Fort Worth, Texas

Customer Challenge

A large hospital in the Dallas/Fort Worth area had concerns about the integrity of its medium-voltage electrical distribution system, and it contracted with S&C's Power Systems Solutions division to perform a thorough inspection and assessment of the equipment.

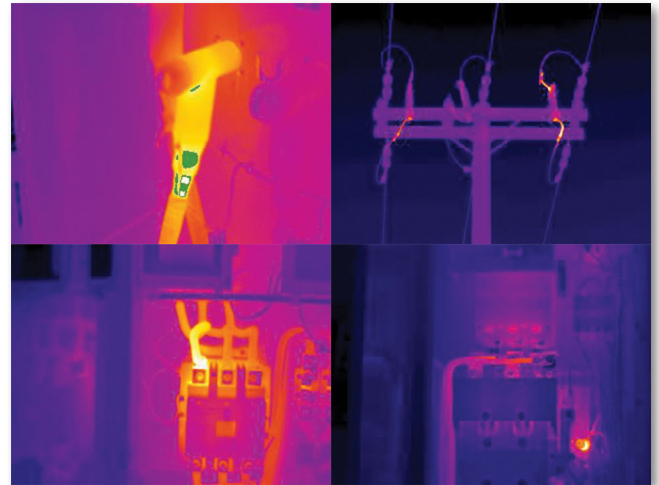
S&C Solution

An S&C Field Service Technologist performed a visual inspection of all the equipment as well as an infrared inspection using a thermal imaging camera. The camera measures the temperature of a particular component in relation to other components under the same load.

The infrared inspection revealed a number of hot spots. Some of these hot spots need ongoing monitoring. But four were found to require immediate attention...two urgently.

Of particular concern were a connection inside a "T body" elbow, connections on the source and load sides of a fused cutout, a connection inside a control panel, and a connection on the load-side terminal of a fuse. S&C's report to the hospital included these findings, along with recommended corrective actions.

The hospital subsequently requested that S&C perform the corrective actions on a turnkey basis. S&C provided the necessary materials, labor, and supervision to complete all the work. With S&C's in-depth understanding of the hospital's distribution system, it was possible to perform the corrective actions without the need for an outage.



Results

The hospital was pleased with the outcome and has contracted with S&C to perform regularly scheduled inspections of their electrical system.