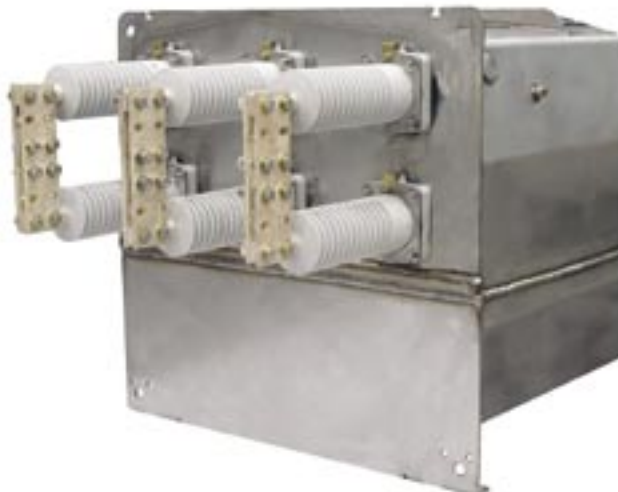


S&C's System VI Switchgear is now available with 2000-ampere continuous rated main bus, in voltage ratings through 38 kV and short-circuit ratings through 25 kA symmetrical. Up to five 600- or 900-ampere load-interrupter switch and/or fault interrupter ways can be furnished.

Four-layer copper bus, dual air bushings, and a taller, wider tank are required to attain the 2000-ampere continuous rating. The dual air bushings are connected to the bus, which is external to the tank.

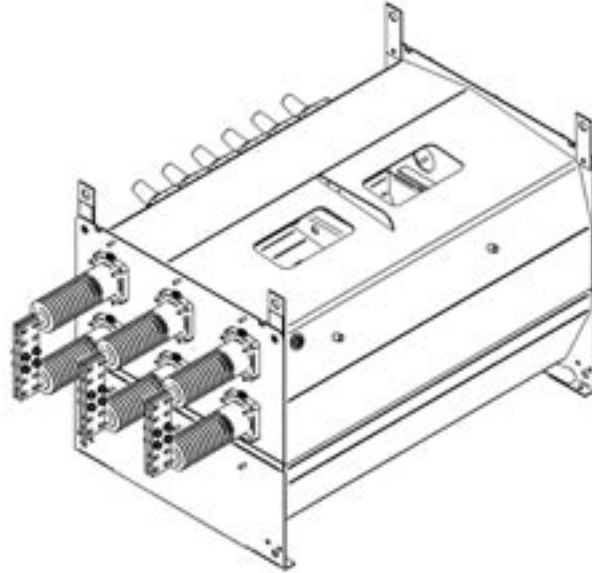


System VI Switchgear.

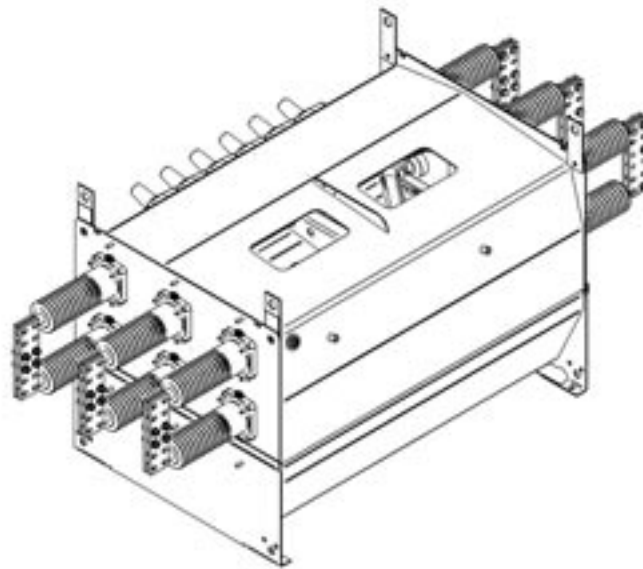


Detail of System VI Switchgear tank with 2000-ampere main bus, utilizing dual air bushings.

Models with 2000-ampere main bus require dual air bushings. Depending on the options chosen, dual air bushings may be present on one or both sides of the switchgear.



Dual air bushings shown on one side of the switchgear.



Dual air bushings shown on both sides of the switchgear.

Printed in U.S.A.