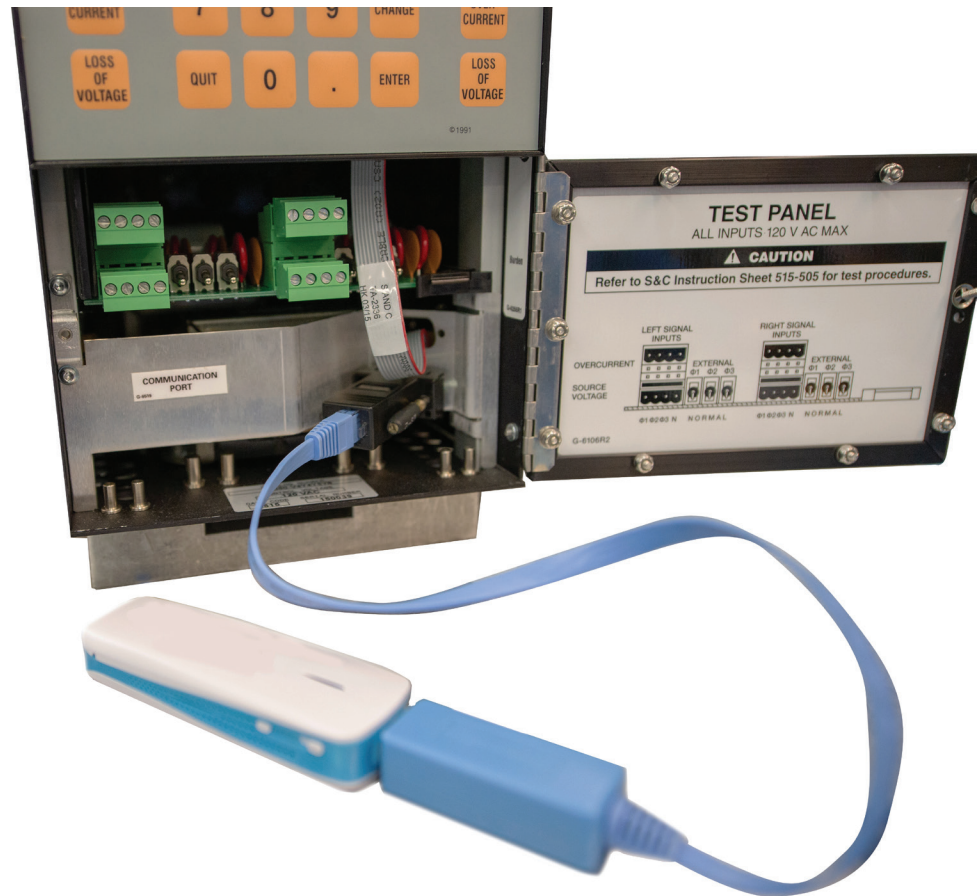


New Wi-Fi Adapter and Software Application Supports the Micro-AT Source Transfer Control with Today's Operating Systems



A new Wi-Fi adapter and software application is now available to operate the Micro-AT Source-Transfer Control with today's personal computer (PC) operating systems. The Wi-Fi adapter is used in conjunction with the Human Machine Interface (HMI) software application to enable users with the Windows 7 or 10 operating systems to locally connect to the Micro-AT control wirelessly for operation and monitoring.

The Micro-AT control is used with several S&C products, including metal-enclosed switchgear, source-transfer pad-mounted gear, and source-transfer Vista® Underground Distribution Switchgear, to provide automatic source transfer for common-bus or split-bus applications. With the number of products furnished with Micro-AT controls and as demand for better connectivity and operating system compatibility rises, the HMI application software and Wi-Fi adapter helps meet these demands.



Micro-AT® Source-Transfer Control

Wi-Fi Adapter Kit

The Wi-Fi adapter kit is used with the HMI application software and user-furnished PC to wirelessly connect the Micro-AT control to the PC. The Wi-Fi adapter kit is easy to implement, requiring no tools to install to the Micro-AT control.

In addition to a quick and easy setup, the adapter can provide more than 5 hours of battery operation with its lithium-ion battery, enabling plenty of time to view and analyze the Micro-AT control.

The Wi-Fi adapter kit consists of the following components (see Figure 1):

1. A Wi-Fi adapter
2. A USB serial cable – Connects the adapter (USB side) to the DB9 connector (RJ45 side)
3. A micro-USB charging cable – Used to charge the Wi-Fi adapter
4. An RJ45-to-DB9 connector – Connects the USB-serial cable (RJ45 side) to the Micro-AT control DB9 port

HMI Software Application

Available for download on the S&C customer portal at www.sandc.com/en/support/sc-customer-portal, the HMI software application enables the user to locally connect to the Micro-AT control. After installing the software and

connecting the Wi-Fi adapter, the user can open the HMI software application directly from the desktop. See Figures 2 and 3.

The software displays the state of the system, shows operation events, and allows the user to configure the system. With an updated interface, the software is easy to use while maintaining the same functionalities of its predecessor, the Matlink Communication Software. See Figure 3 on page 2.

Users with PC operating systems prior to Windows 7 can still use Matlink to connect to the Micro-AT control.

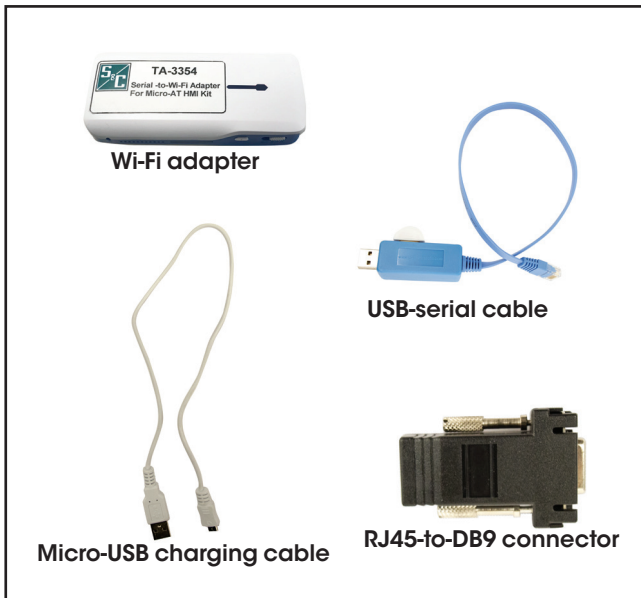


Figure 1. Wi-Fi adapter kit components.

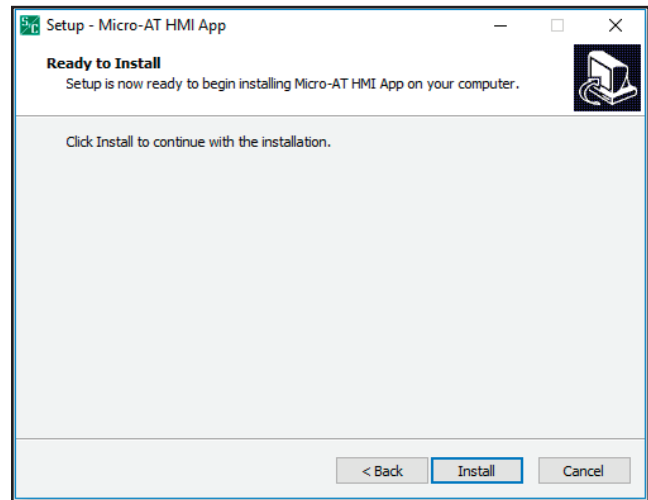


Figure 2. HMI software application installer file found on the S&C customer portal.

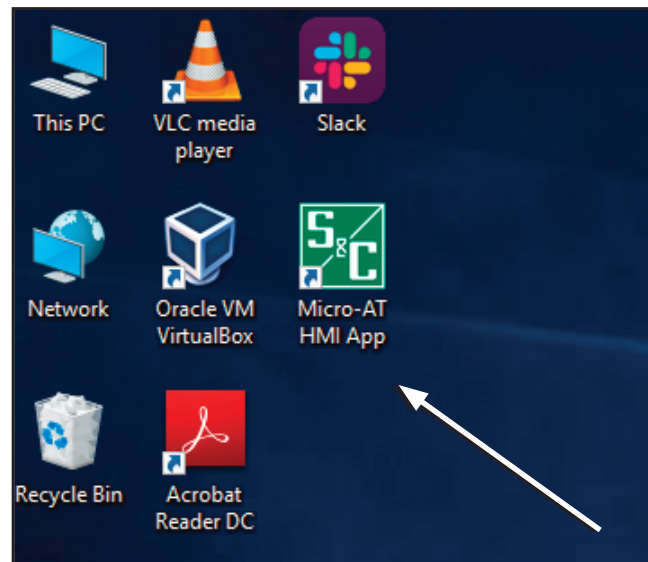


Figure 3. The HMI software application desktop icon.

Micro-AT® Source-Transfer Control

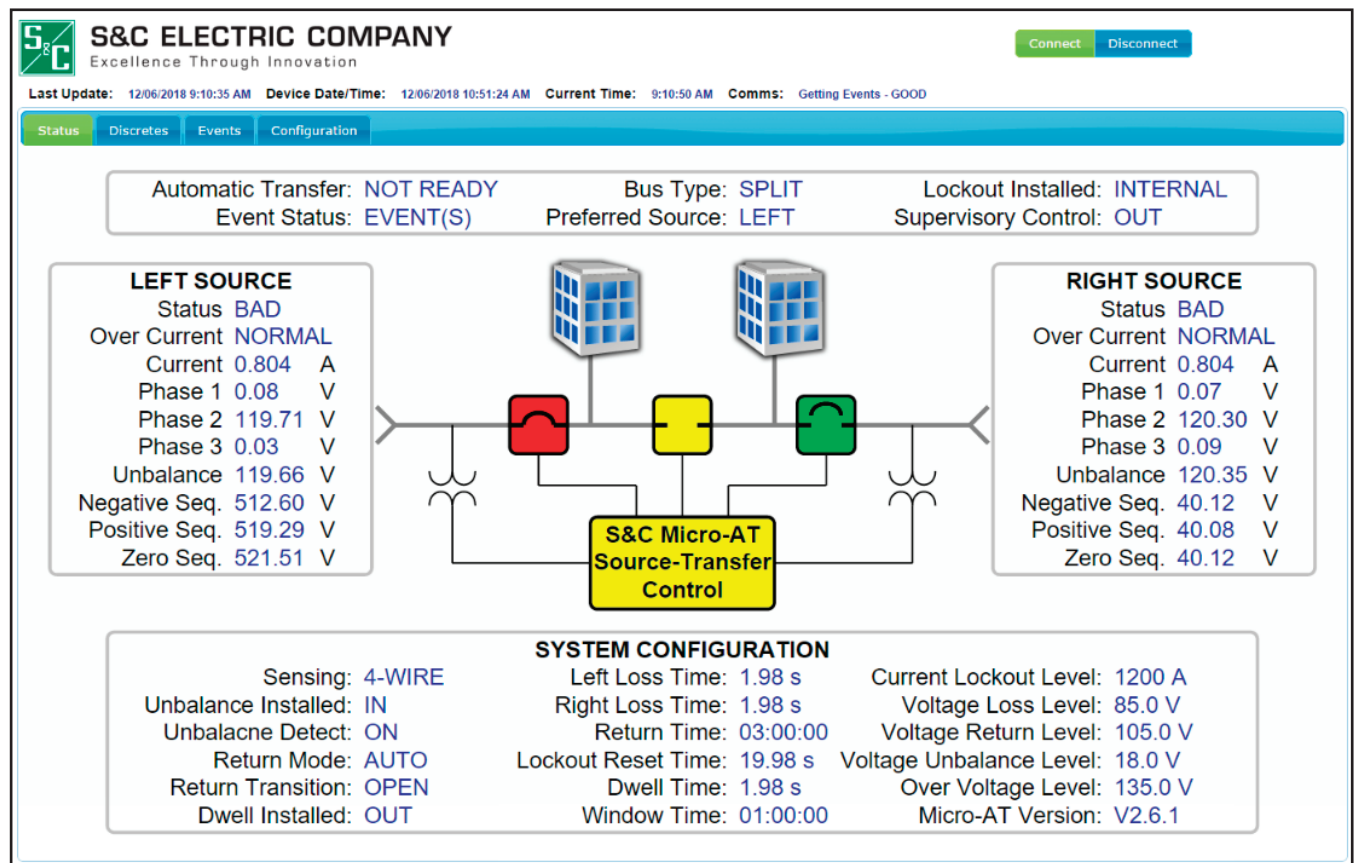


Figure 4. HMI software application.

Micro-AT Control Upgrades

Depending on the catalog number and date of manufacture of the Micro-AT control, an upgrade kit to use the HMI software application and Wi-Fi adapter may be required. Please contact your S&C representative for more information on the upgrade kits and availability.

