

Several new features are now available for Micro-AT Source-Transfer Controls: an optional communication card feature, as well as three new field selectable standard features that will be furnished with all Micro-ATs.

Optional Communication Card Feature

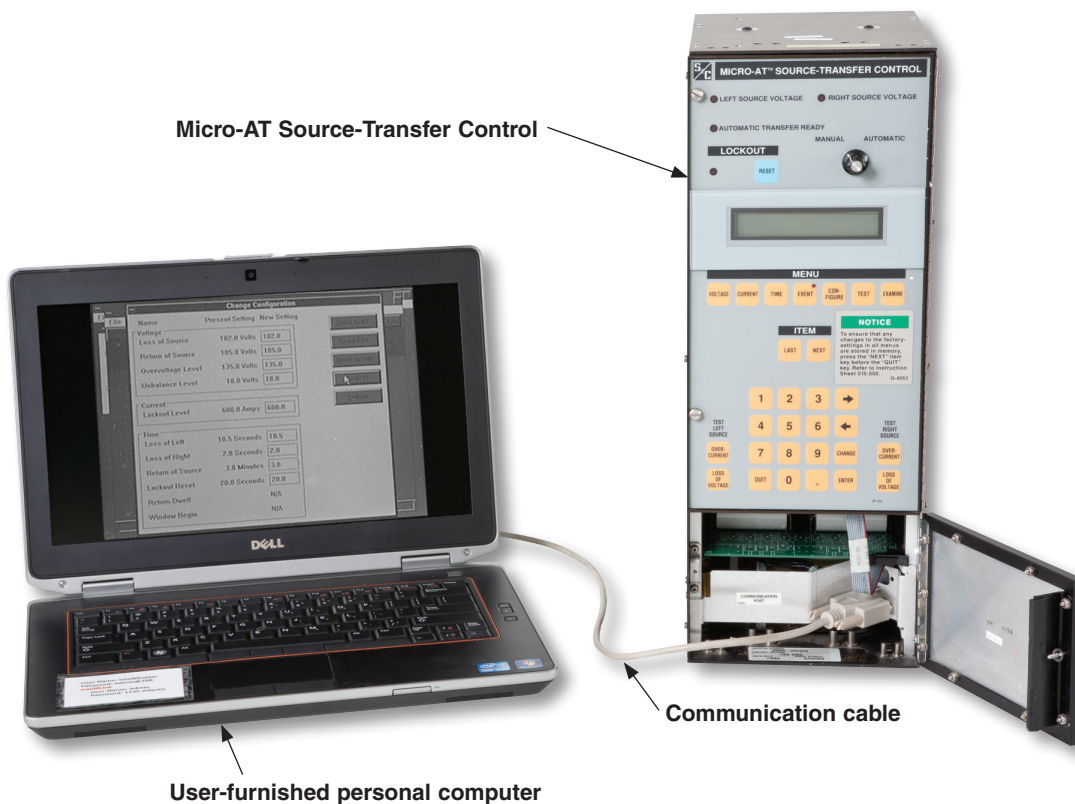
The communication card option for the Micro-AT Source-Transfer Control is utilized in conjunction with a user-furnished personal computer▲ to provide the convenience of:

- Local uploading of events recorded in the Micro-AT’s “EVENT” menu;
- Local uploading of the Micro-AT’s settings—i.e., the operating characteristics programmed in the “CONFIGURE” menu and the voltage-, current-, and time-related operating parameters programmed in the “VOLTAGE,” “CURRENT,” and “TIME” menus, respectively;

- Local uploading of digital input states and digital output states in the Micro-AT’s “EXAMINE” menu;
- Local uploading of Micro-AT display messages explaining why the automatic-transfer “ready” indicating lamp isn’t lighted; and
- Local downloading of the user’s standard operating parameters to the Micro-AT control.

A Micro-AT communication cable, ordered separately, is required for connecting the communication card to the personal computer; this cable is available in a version for PCs having a 25-pin serial communication port, as well as a version for PCs having a 9-pin communication port.

▲ Requires a Windows® 95, 98, 2000, NT, XP, or Windows 7 32-Bit operating system. A Windows 7 64-Bit Operating System must be run in XP Mode (only available for Professional and Ultimate Operating Systems). A USB-to-Serial adapter must be used if the computer does not have a Serial port.



Communication card option for Micro-AT Source-Transfer Controls.

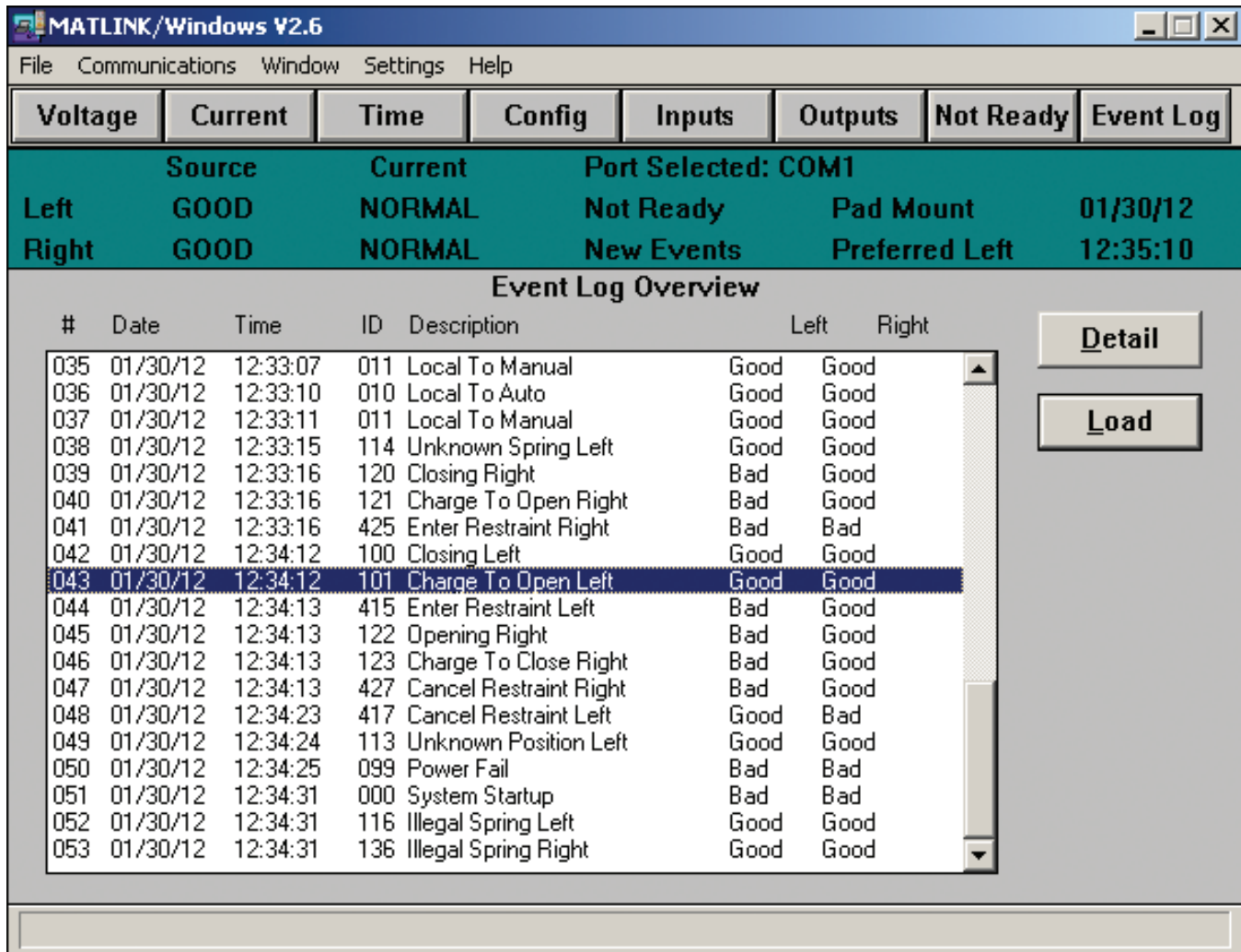


Additional Field Selectable Standard Features

These new features include the following:

- **“Window” Return-of-Source Transfer.** When selected, this feature permits automatic return-of-source transfer to occur only if the time of day is within a user-specified time “window.” Such an arrangement can enhance power quality for the utility’s customer, since transfer can be set to occur at a particular time when the implications are least severe for critical loads.

- **Magnetizing-Inrush Current Restraint for Overcurrent-Lockout Feature.** Upon loss of source voltage or—if the unbalance detection feature is programmed—the occurrence of voltage unbalance for 5 cycles, overcurrent detection is suppressed for 1 second . . . thus preventing pickup of the lockout feature due to transformer magnetizing-inrush current.
- **Custom Access Code.** When this feature is selected, the Micro-AT control will accept either the standard access code or a custom access code chosen by the user. This feature is useful in instances where the user has other, similar equipment requiring an access code to program.



Reviewing events recorded in Micro-AT Source-Transfer Control “EVENT” menu.