

S&C's 400-Ampere Power Fuse

The indoor Type SM-40 Power Fuse is for use in S&C Metal-Enclosed Switchgear and S&C Metal-Enclosed Fuses. It is offered in ratings of 4.8 kV, 13.8 kV, and 25 kV, with a continuous-current rating of 400 amperes. Interrupting ratings are 25,000 amperes RMS symmetrical at 4.8 kV and 13.8 kV, and 20,000 amperes RMS symmetrical at 25 kV.

The SM-40 Power Fuse can be provided in the applicable offerings of Metal-Enclosed Gear and Metal-Enclosed Fuses in the disconnect, 45° opening vertical style. See Figure 1. It also can be provided in a common frame arrangement with Mini-Rupter® Switches.

Fuse mountings feature a rugged formed-steel base, Cypoxy™ Insulators, tin-plated copper terminal pads, and silver-clad spring-backed contacts at the latch and hinge ends of the fuse. Bronze-alloy fuse unit end-fittings for the SM-40 Power Fuse include a brilliant red blown-fuse target that projects from the upper end-fitting when the fuse operates. The blown-fuse target automatically resets when the fuse unit is replaced.

An S&C Silencer developed especially for the SM-40 Power Fuse virtually eliminates venting. Superb performance across the full spectrum of fault currents is achieved by means of a special chamber containing high-melting-temperature ceramic materials to “pre-cool” exhaust gas for more efficient silencer operation.

Pre-cooling of exhaust gas also provides for a lighter-weight design (compared to an S&C Snuffler) that facilitates handling of this 400-ampere fuse. Fuse handling may be accomplished using a universal pole equipped with a Grappler™ Handling Tool.

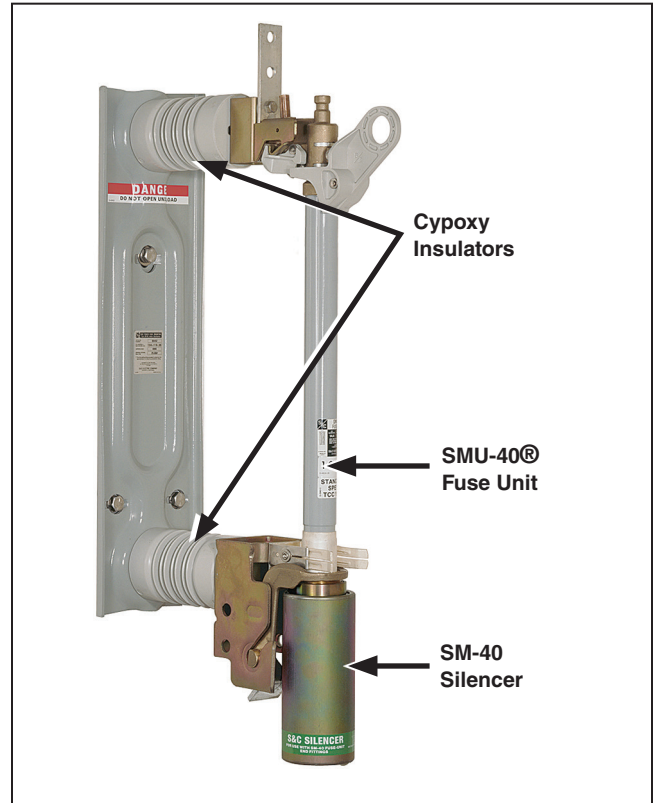


Figure 1. A Type SM-40 Power Fuse.



S&C Type SM-40 Power Fuses

The SMU-40 Fuse Units for use with SM-40 Power Fuses are available in the S&C Standard Speed and Slow Speed in ratings through 400 amperes. SMU-40 Fuse Units incorporate nondamageable helically coiled silver fusible elements that are unaffected by transient surges. Consequently, the time-current characteristic (TCC) curves of these fuses are precise and permanently accurate, providing predictable and reliable performance.

Full-size TCC curves for SMU-40 Fuse Units are available online at sandc.com/tcc.

For additional information, consult the nearest S&C sales office.

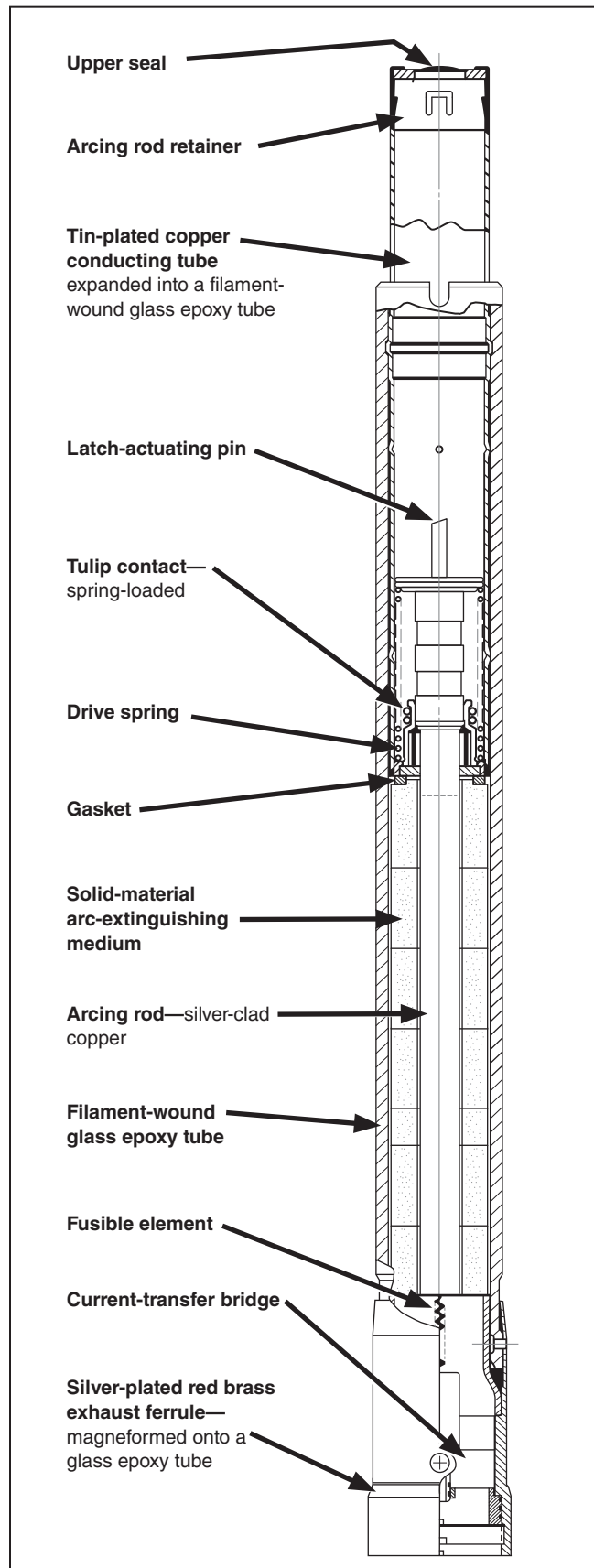


Figure 2. A cutaway view of an SMU-40 fuse unit, showing internal components.