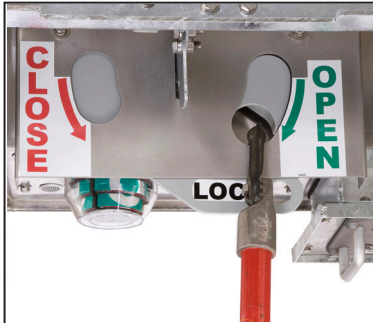


Non-Disconnect IntelliRupter® PulseCloser® Fault Interrupter (15.5 kV and 27 kV)—Quick Operating Guide



Interrupter Open/Close/Ready Lever
To open the interrupters:
Pull down on the right lever. In the down position, closing is blocked.
To close the interrupters:
Power must be available from the batteries (if furnished) or the energized distribution line. Remove the hot line tags, if applicable. Push up on the right lever. Then, pull down once on the left lever for the First Closing Profile, or quickly pull down twice on the left lever for the Second Closing Profile.

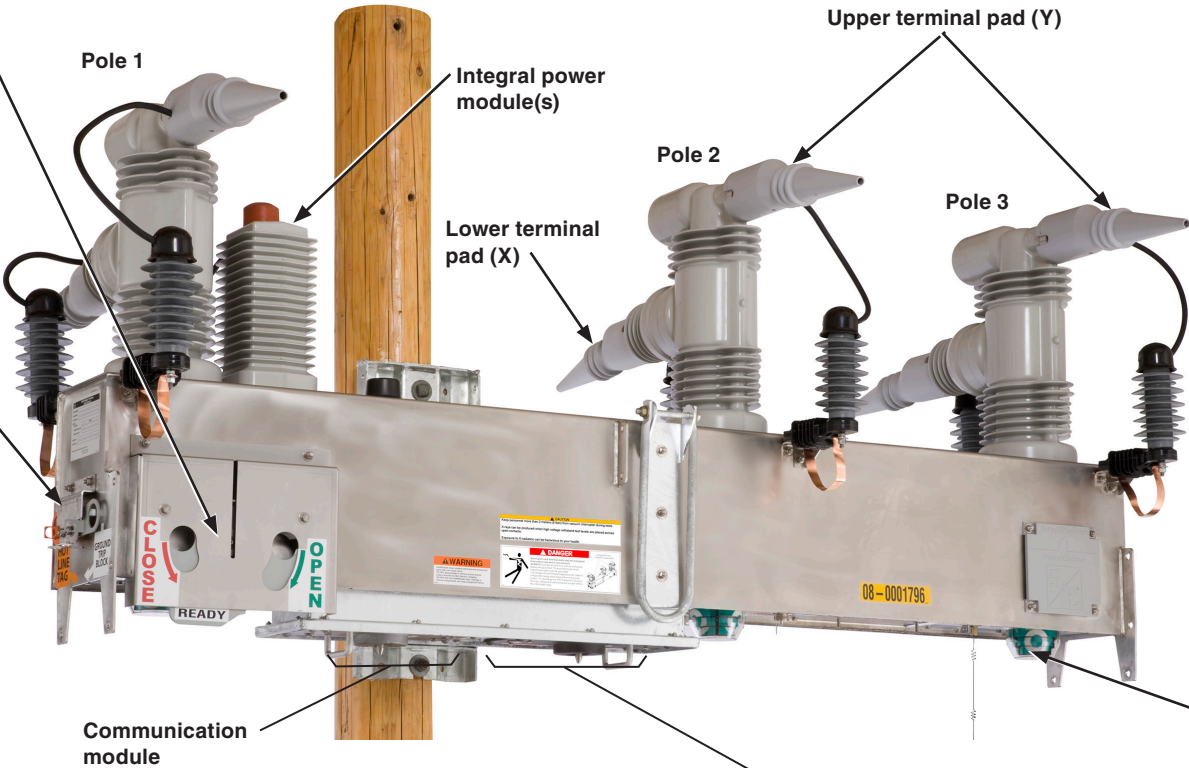


GROUND TRIP BLOCK Lever (if furnished)
To manually apply a ground trip block:
Pull down on the GROUND TRIP BLOCK lever. (When in the applied position, the selected elements will be blocked or change as indicated in the setup. See S&C Instruction Sheet 766-530.)
To remove a manually applied ground trip block:
Push up on the GROUND TRIP BLOCK lever. (Placing the GROUND TRIP BLOCK lever in the **Up** position will not enable any elements that have not been enabled in the active protection profile.)

HOT LINE TAG Lever
To manually apply a hot line tag:
Pull down on the HOT LINE TAG lever.
To clear a manually applied hot line tag:
Push up on the HOT LINE TAG lever.
To clear an electronically applied hot line tag when a hot line tag has been applied manually:
Push up on the HOT LINE TAG lever. Then, pull down and push up on the HOT LINE TAG lever once, without delay.
To clear an electronically applied hot line tag when a hot line tag has not been applied manually:
Pull down and push up on the HOT LINE TAG lever twice, without delay.

⚠ WARNING

An IntelliRupter PulseCloser Fault Interrupter must be installed, operated, and maintained by qualified persons knowledgeable in overhead electric power distribution equipment and the associated hazards. This guide is not a replacement for adequate training and experience in safety procedures for this type of equipment. Read S&C Instruction Sheets 766-510, 766-530, and 766-540 thoroughly and carefully before installing and operating your IntelliRupter PulseCloser Fault Interrupter.



Interrupter OPEN/CLOSED Indicator (one per pole)
Green: Interrupter open—"O"
Red: Interrupter closed—"I"
Colors are reversed on an IntelliRupter® fault interrupter furnished with option "F2"

- If the STATUS indicator is off:**
- If the line is not energized, energize the side with the integral power module.
 - If the line is energized, replace the protection and control module.
- If the STATUS indicator does not indicate there is a Wi-Fi connection:**
- If the line is energized, move the computer at least 20 feet (610 cm) closer.
 - Try another computer furnished with IntelliLink Setup Software and the appropriate security keys.
 - Replace the communication module.

- If the IntelliRupter fault interrupter does not respond to SCADA commands:**
- Enable remote operation (see the *IntelliLink Setup Software Operation—Main screen*). Remove all hot line tags and push up on the right interrupter OPEN/CLOSE/READY lever.
 - Apply a local hot line tag. If the IntelliRupter fault interrupter does not send a hot line tag status point to SCADA, replace the communication module.

NOTICE

If assistance is required, call the S&C Global Support and Monitoring Center at 1-888-762-1100.

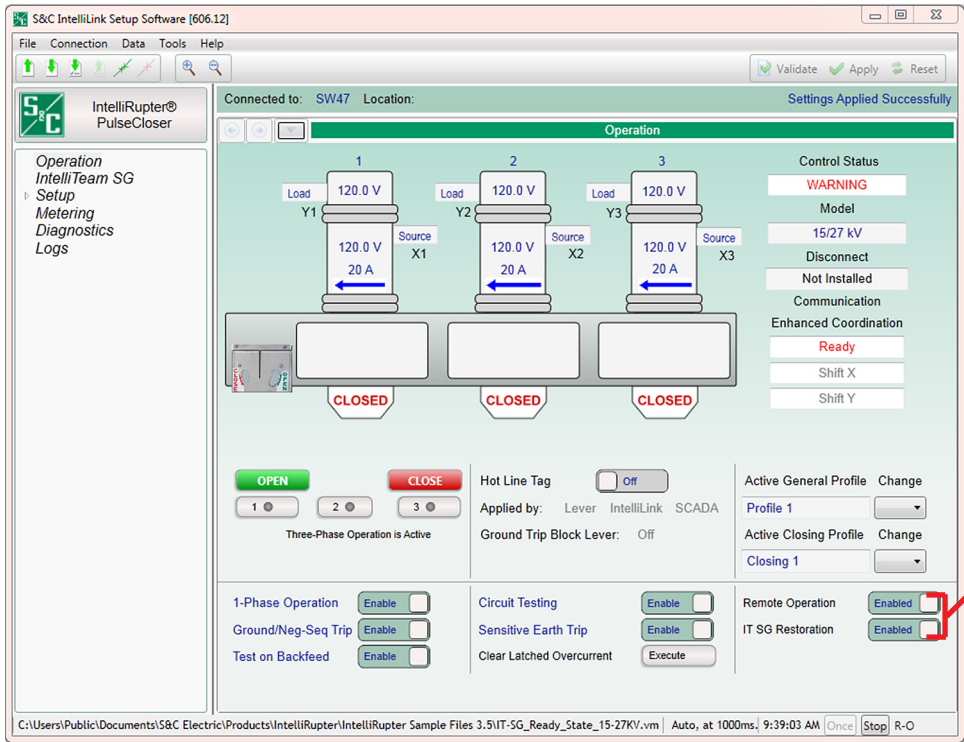
Protection and Control Module



HOT LINE TAG Indicator (amber LED)
Flashes for ½ second every 2 seconds: Hot line tag applied
Off: All hot line tags removed

STATUS Indicator (white LED)
Flashes for ½ second every 30 seconds: Normal operation
Pulsates dim to bright: Wi-Fi is connected
Flashes for ½ second every second: Any error state, or a settings mismatch is active
Flashes 3 times (½ second on—½ second off) every 30 seconds: Loop restoration is timing or Ready, or the IntelliTeam® Setup Software is ready
Steady for 10 seconds, then flashes ½ second every 30 seconds: Wi-Fi is disconnected; an **Open/Close** command from the interrupter OPEN/CLOSE/READY lever, Wi-Fi, or SCADA; or the GROUND TRIP BLOCK lever moved
Solid On: Remote Operation is disabled
Off: IntelliRupter fault interrupter is not powered, or is not functioning properly

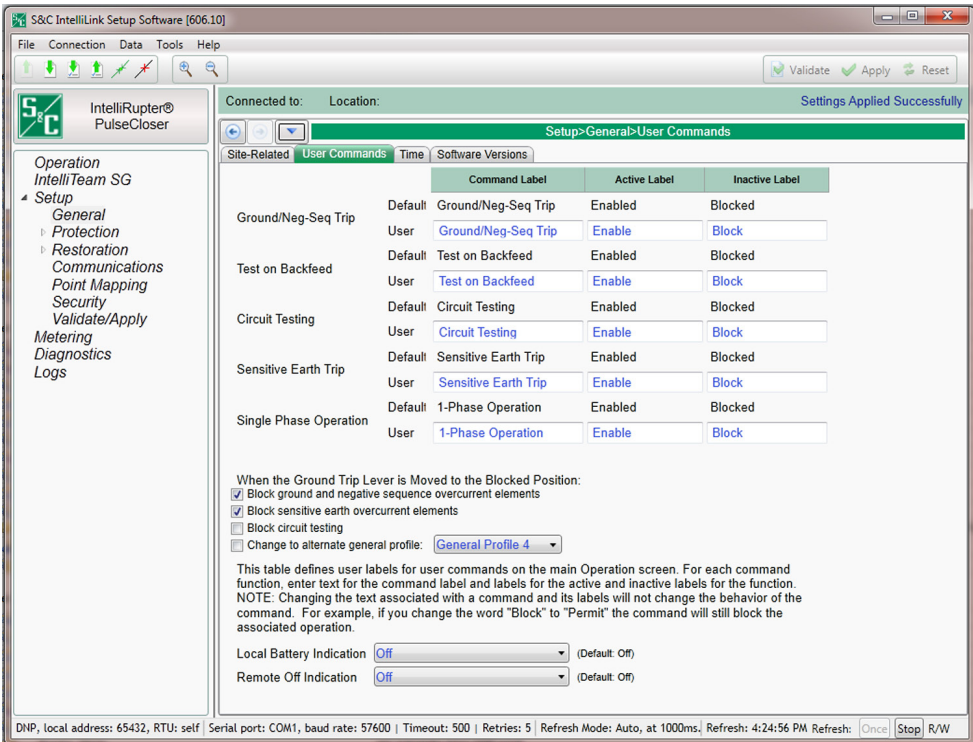




NOTICE

To disable automatic load restoration through the IntelliTeam® SG Automatic Restoration System (if furnished), select: IT SG Restoration – Disabled.

To disable the **Loop Restoration** feature (if furnished), select: Loop Restoration – Disabled.



IntelliLink Setup Software: Operation Screen

Match the location of the interrupter OPEN/CLOSE/READY lever on the IntelliRupter fault interrupter to the OPEN/CLOSE/READY lever on this screen.

- Poles are labeled left to right, configured here as 1, 2, and 3.
- X and Y terminal designations are configurable and affect directionality. The default configuration is:
 - Upper terminals pads (Y1, Y2, and Y3) are labeled Y, and
 - Lower terminal pads (X1, X2, and X3) are labeled X.
- Voltage is shown for the three poles at each terminal pad. Phase-to-ground voltage (1-grd, 2-grd, and 3-grd), or phase-to-phase voltage (1-2, 2-3, and 3-1) can be selected.
- Interrupter OPEN/CLOSE indicators match the indicators on the IntelliRupter fault interrupter, in this case they are open.
- When an IntelliRupter fault interrupter has tripped open, the state of each pole is shown. For example: **Testing-SEF**, **Lockout-Volts** (lockout on voltage trip), or **Lockout-Freq** (lockout on frequency trip). For **Lockout-OC** (lockout on overcurrent trip), a lightning bolt indicates the faulted phase(s) on the side the fault occurred. The current on each pole at the time of tripping is also shown.
- When an IntelliRupter fault interrupter is closed, load current and current direction are shown for each pole.
- **Control Status** shows the status of the protection and control module (in this case **Alarm**). It may also display: **Okay**, **Warning**, **Error**, **Maing Mode**, or **Settings Mismatch**.

- **Disconnect** shows the position of the visual disconnect: **Open**, **Closed**, or **Not Installed**.
- **Loop Restoration** or **Communication Enhanced Coordination** status is displayed when either feature is furnished and enabled.
- **OPEN** and **CLOSE** buttons trip and close the interrupters. A single phase can be operated if the **Single Phase Operation** function is active.
- **Single Phase Operation** function, **Ground Trip Block**, and **Test on Backfeed** can be enabled or disabled.
- **Hot Line Tag** can be enabled or disabled, and the application method is indicated.
- **Circuit Testing** and **Sensitive Earth Trip** can be enabled or disabled.
- **Clear Latched Overcurrent** can be executed.
- **Active General Profile** and **Active Closing Profile** can be selected.
- **Remote Operation** can be enabled or disabled.
- **IT SG Restoration** can be enabled or disabled.
- **Connected to and Location**: At the top of the screen, show the name and address of the IntelliRupter fault interrupter connected through IntelliLink software.

IntelliLink Setup Software: Setup-General-User Commands Screen

- **Enter a Command Label, an Active Label, and an Inactive Label option for every User Command**. These will be displayed on the *Operation* screen. Text entered for **Active Label** or **Inactive Label** options does not change their functionality.
- **Ground Trip Blocked Functions**: Check to enable desired functionality.
- **Local Battery Indication**: Select "On": if a battery is installed, then the **Status** indicator on the Control Module will flash ½ second every second when the battery is low, bad, or disconnected. If no battery is installed, select "Off."
- **Remote Off Indication**: The **Status** indicator on the Control Module can be configured to display solidly on when the **Remote Operation** function is disabled.
- **Connected to and Location**: At the top of the screen, show the name and address of the IntelliRupter fault interrupter connected through IntelliLink software.

NOTICE

Refer to S&C Instruction Sheet 766-530 for detailed information about IntelliRupter fault interrupter configuration.