

Installation

Table of Contents

<u>Section</u>	<u>Page</u>	<u>Section</u>	<u>Page</u>
Architecture and System Requirements		Command Summary	
Architecture	2	Obtaining a Permanent License	10
System Requirements	2	Software Version History	11
Recommended System Hardware	2		
Installation	3		
Licensing and Configuration			
Licensing	6		
Launching and Configuring the Software	6		



Architecture and System Requirements

Architecture

The S&C IntelliCom View Pro Network Management Software system includes a server application, a client application, and three supporting packages: JBoss®, PostgreSQL, and FreeRADIUS.

The server application manages the system. Optionally, it uses JBoss for Web client support, PostgreSQL as a database, and FreeRADIUS to authenticate user classes.

The client application connects to the server application.

System Requirements

The S&C IntelliCom View Pro Network Management Software system includes a server application, a client application, and three supporting packages: JBoss®, PostgreSQL, and

The IntelliCom View Pro software package can be installed on most computers that run Microsoft® Windows XP, Windows Vista, or Windows 7. It can also be installed on virtual machines that support these operating systems.

IntelliCom View Pro is written in Java® and requires the current version of Java, which is available at no charge at www.java.com. Be sure to download and install the current version of Java before proceeding with the installation.

Recommended System Hardware

Because the S&C IntelliCom WAN Mesh Radio (1720) is an intelligent device, the IntelliCom View Pro server application's processor requirements depend more on the number of simultaneous users than on the number of hardware devices under management. As a rule of thumb, an Intel® Core 2 Duo at 2 GHz will support 10–12 simultaneous users.

The server application is intended to run 24/7 in order to collect performance statistics and to log all network events. Therefore, it should be installed on a system with an uninterruptible power supply. Redundant power supplies and redundant arrays of independent disks (RAIDs) are preferred, but not required.

The software package can also be installed on a laptop for field use.

After ensuring the current Java package is installed on the target machine, refer to your software media (CD, download, or flash drive) for a file named `intellicom_installer_10.10.1.3`. Double-click on it.

Note: The version number in the file name is current as of the publication date of this manual. The installation process is the same for newer versions.

The software installation process is automatic. In most cases, the default settings are the correct choices in the dialog boxes that appear on the screen.

Follow the steps shown in the following screenshots to install the software. Screenshots have been trimmed for this manual:

STEP 1. Start the installation process using the screen shown in Figure 1.

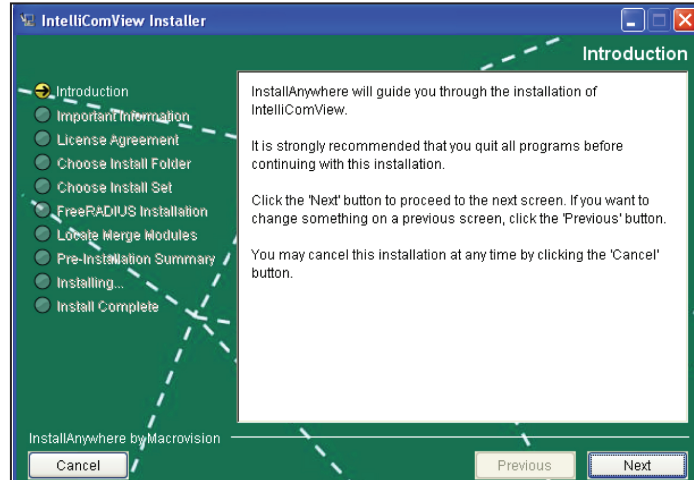


Figure 1. The Initial Installation dialog box.

STEP 2. Currently, only English is supported. See Figure 2 (left). The installation location can be modified. See Figure 2 (right).

Note: Multiple versions of the software can be installed on the same machine. It is not necessary (or recommended) to uninstall old versions.

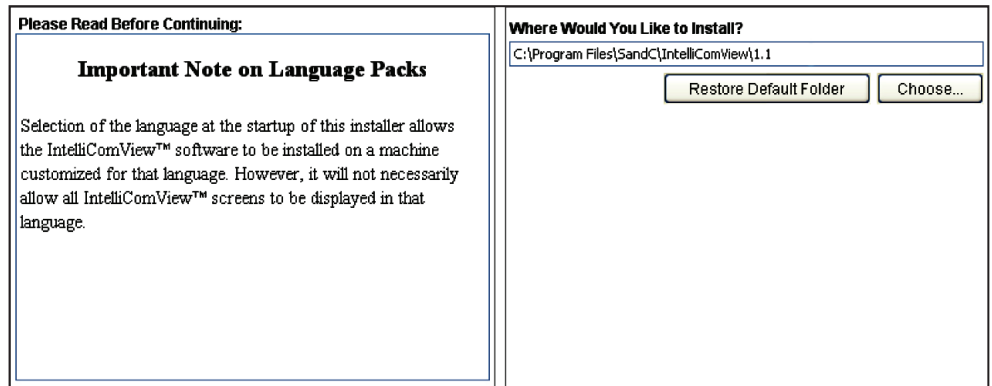


Figure 2 Dialog box showing the language and installation location.

STEP 3. You must accept the licensing agreement. See Figure 3 (left). The installation options are shown in Figure 3 (right).

Note: The IntelliCom View Pro software option is not supported in this release. Install either the IntelliCom View Pro software option or IntelliCom View Pro software with HTTP for browser support.

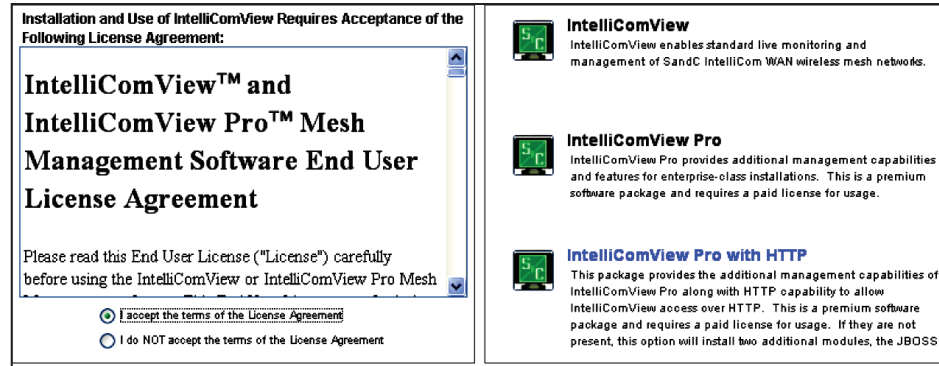


Figure 3. Dialog box showing the license and installation type.

STEP 4. The FreeRadius module must be available if the option is selected. The JBoss module must be available if the HTTP option was selected. See Figure 4.

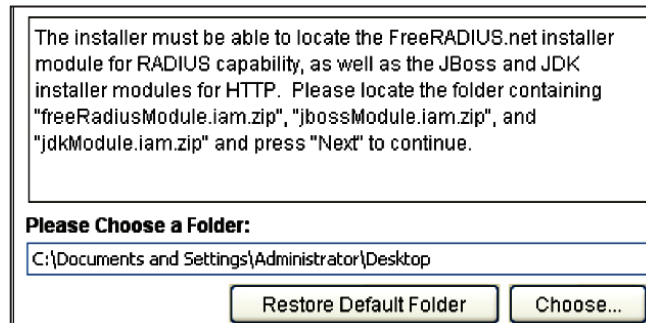


Figure 4. Dialog box showing the FreeRadius and JBoss modules.

STEP 5. A summary of all installation options will appear. If any are incorrect, go back and fix them now. See Figure 5.

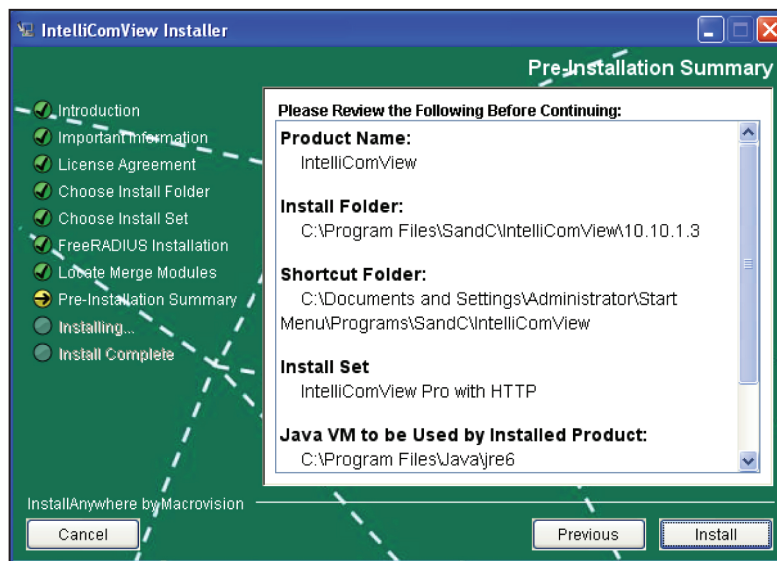


Figure 5. Dialog box showing the installation summary.

STEP 6. A progress bar shows the installation progress. The installation takes only a few minutes. If it takes longer or does not work, the computer may have the wrong version of Java and will need to install the most current version. See Figure 6.

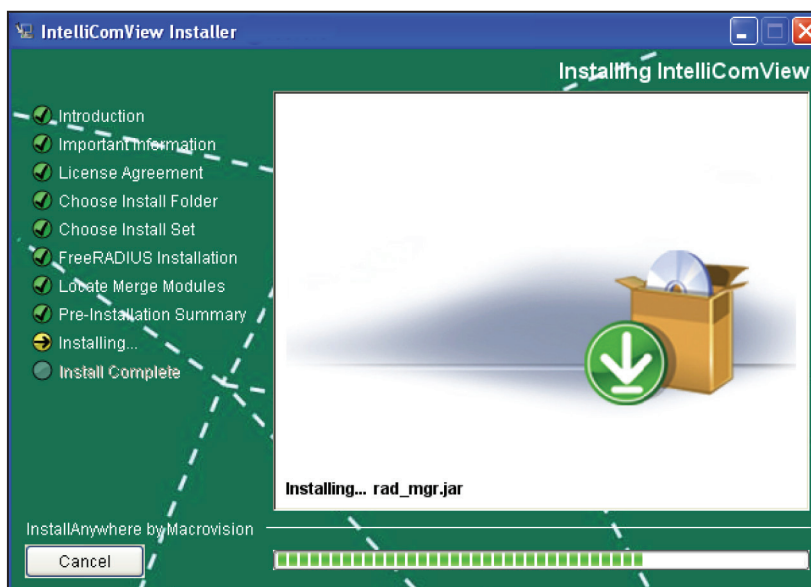


Figure 6. Dialog box showing the installation process.

Licensing

The IntelliCom View Pro server program is licensed to a single computer. The client application may be freely copied to other computers.

A temporary license allows the software to run for a short period of time. During this time, obtain and install a permanent license for the software. After installation, the server software must be configured. Double-click on the IntelliComView Pro Launcher icon, shown in Figure 7, to open the launcher window.

Launching and Configuring the Software

STEP 7. Double-click to launch the software. See Figure 7.



Figure 7. The Launcher icon.

STEP 8. The Quick Launch icon is used in test and debug environments. It launches both the server application and the client application. When the client application is closed, the server application terminates. See Figure 8. The Server icon launches the server application; it runs until it is manually terminated. If the LED is red, the server is not running; if it is green, the server is running. The Client icon launches the client application. The Server Configuration icon is used for initial server setup and to manage users and other systemwide settings.

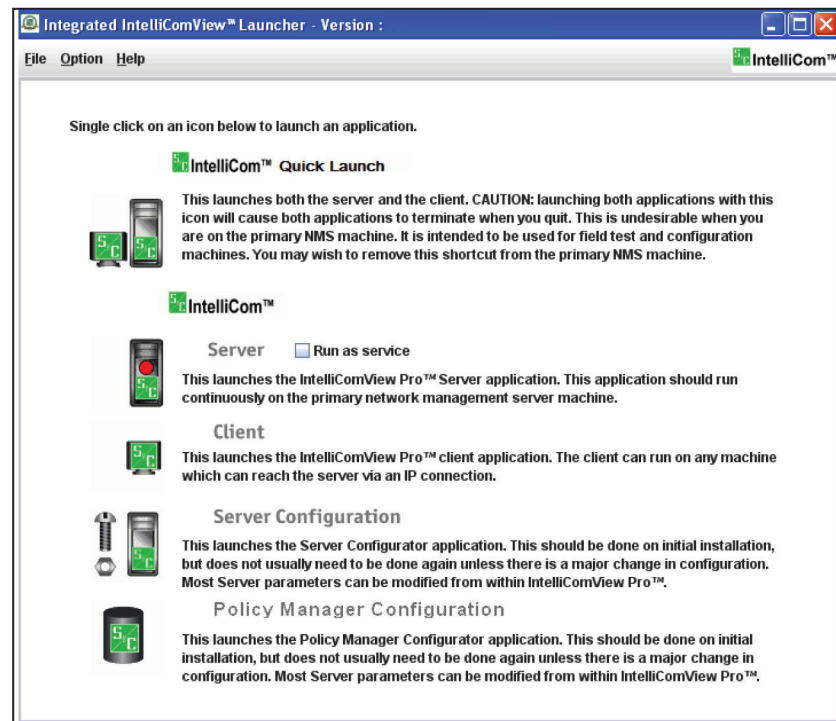


Figure 8. The Launcher window.

Begin by single-clicking on the Server Configuration icon. Because this is the initial installation, several warning messages will appear. A log-in window also appears. Contact S&C to obtain the default username and password.

STEP 9. A warning will appear that the server is not running. Click on the **Yes** button to proceed. See Figure 9.



Figure 9. Dialog box showing the server is not running.

STEP 10. You will receive a warning that the database could not be reached. Click on the **Yes** button to proceed. See Figure 10.

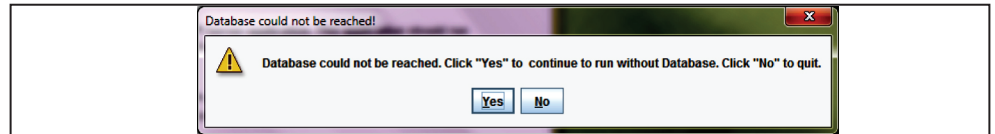


Figure 10. Dialog box showing the database could not be reached.

STEP 11. You will receive a warning that there is no valid license. Click on the **OK** button to proceed. See Figure 11.

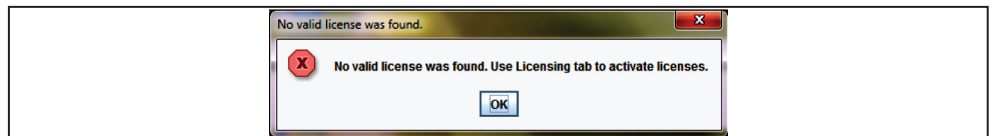


Figure 11. Dialog box showing the no valid license was found.

STEP 12. To avoid repeated warning messages, temporarily disable the databases by unchecking the Use Database box. See in Figure 12. Then click on the **Apply** button. A warning message will appear. Click on the **OK** button. Be sure to disable both databases: PostgreSQL and Radius.

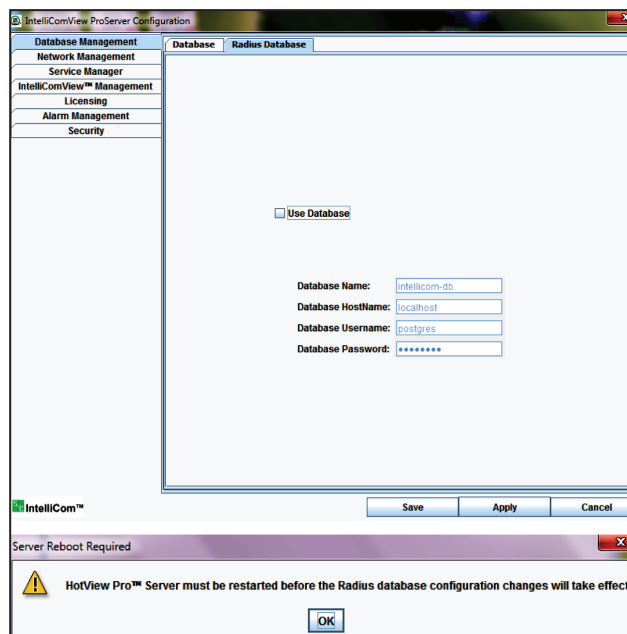


Figure 12. Dialog box showing a server reboot is required.

STEP 13. Enter the license key provided; it is not case-sensitive. See Figure 13. Click on the **Add License Key** button. The key you entered will appear in the list.

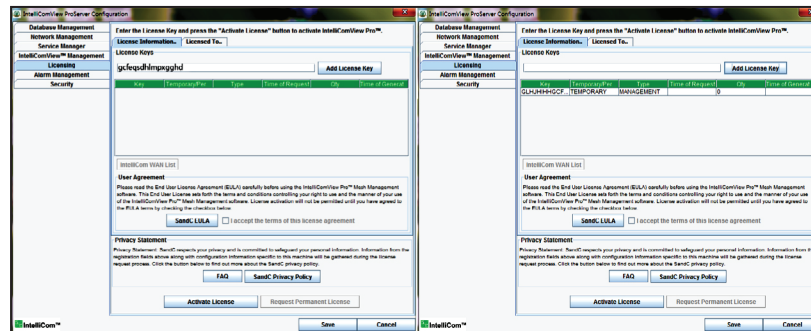


Figure 13. Window for entering the first license key.

STEP 14. Click on the **SandC EULA** button to review the license. Close the license window, and check the acceptance box. See Figure 14. Then, click on the **Activate License** button.

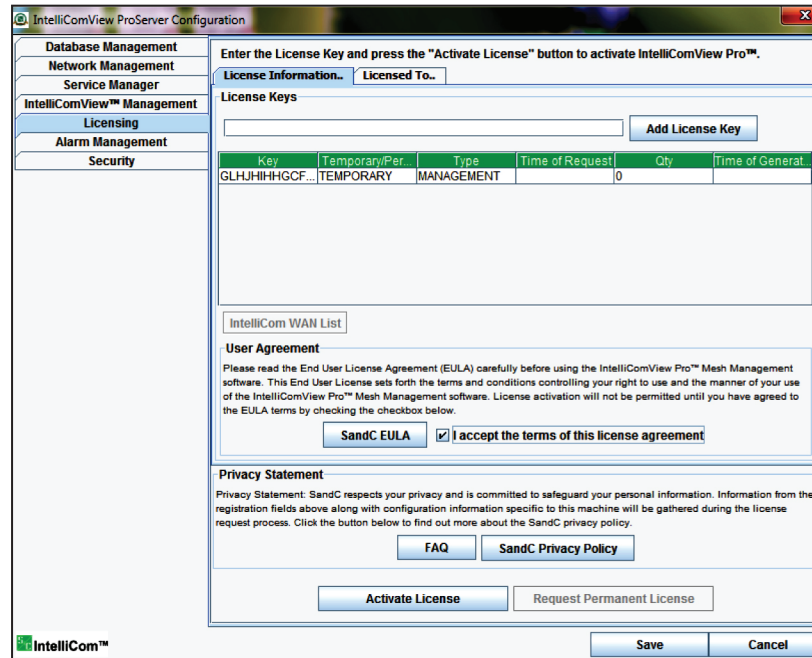


Figure 14. Window for accepting the license and activating the key.

STEP 15. Here, the management license has been added. Licenses for dual radio and MIMO upgrades are also being added. See Figure 15.

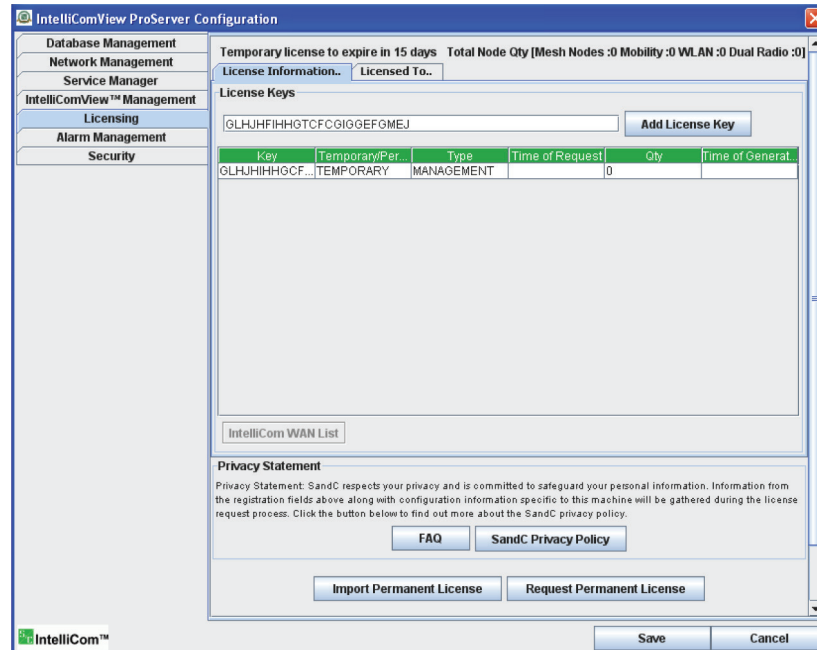


Figure 15. Window showing how to add licenses.

STEP 16. The management, dual radio, and MIMO licenses have been added. The quantities show zero because the licenses are temporary. The correct quantities will appear when the permanent license is obtained. See Figure 16.

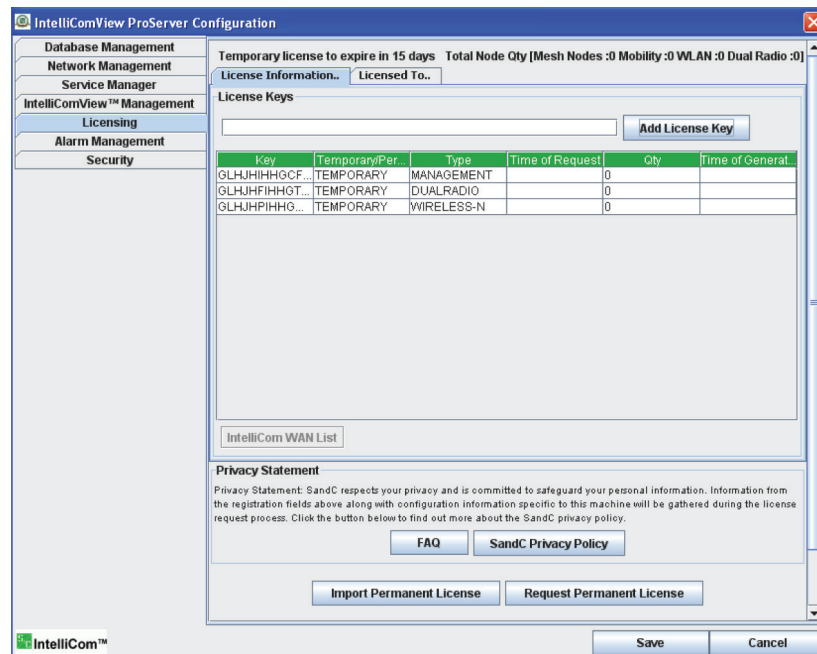


Figure 16. Window showing all licenses added.

Obtaining a Permanent License

To obtain a permanent license, send an email to S&C. You will then receive the permanent license by email. Allow a few days for the return email.

STEP 17. Enter your purchasing information. Then, click on the **Request Permanent License** button. See Figure 17.

The screenshot shows the 'IntelliComView ProServer Configuration' window. The left sidebar contains a tree view with the following items: Database Management, Network Management, Service Manager, IntelliComView™ Management, Licensing (selected), Alarm Management, and Security. The main area is titled 'Purchase Information' and contains the following fields: Purchaser Name (George Grenley), Company Name (Plans2Reality LLC), Address (4662 Helpert Ct), City (Pleasanton), Province/State (CA), Zip/Postal Code (94588), Country (USA), Phone Number (9252006667), Fax Number, Email Address (grenley@plans2reality.com), Purchased From (S and C), and Purchase Date (Aug 17, 2011). There is a checkbox for 'Interested in product update information from SandC' which is unchecked. Below the form is a 'Privacy Statement' section with a 'SandC Privacy Policy' button. At the bottom of the form are two buttons: 'Import Permanent License' and 'Request Permanent License'. The window also shows 'Temporary license to expire in 15 days' and 'Total Node Qty [Mesh Nodes :0 Mobility :0 WLAN :0 Dual Radio :0]'.

Figure 17. Window showing purchaser information.

STEP 18. The license request is a small text file. It can be emailed or saved and emailed later. This is necessary if the server is not able to send email. When receiving the permanent license, save the email attachment (actual license). Then, click on the **Import Permanent License** button. Navigate to the saved license file and select it. The license now becomes active and permanent. See Figure 18.

This screenshot is similar to Figure 17, but it includes a dialog box titled 'Request Permanent License'. The dialog box contains the following text: 'To send request for permanent license by email click 'YES'. To send request for permanent license later click 'NO'. There are 'Yes' and 'No' buttons at the bottom of the dialog. The background window is partially obscured by the dialog box.

Figure 18. Dialog box showing the request method.

For assistance, contact S&C Headquarters at (773) 338-1000; in Canada, call (416) 249-9171, or visit S&C's website at sandc.com to find an office in your area.

Software Version History		
Version	Release Date	Notes
1.0	August 29, 2011	Initial Release