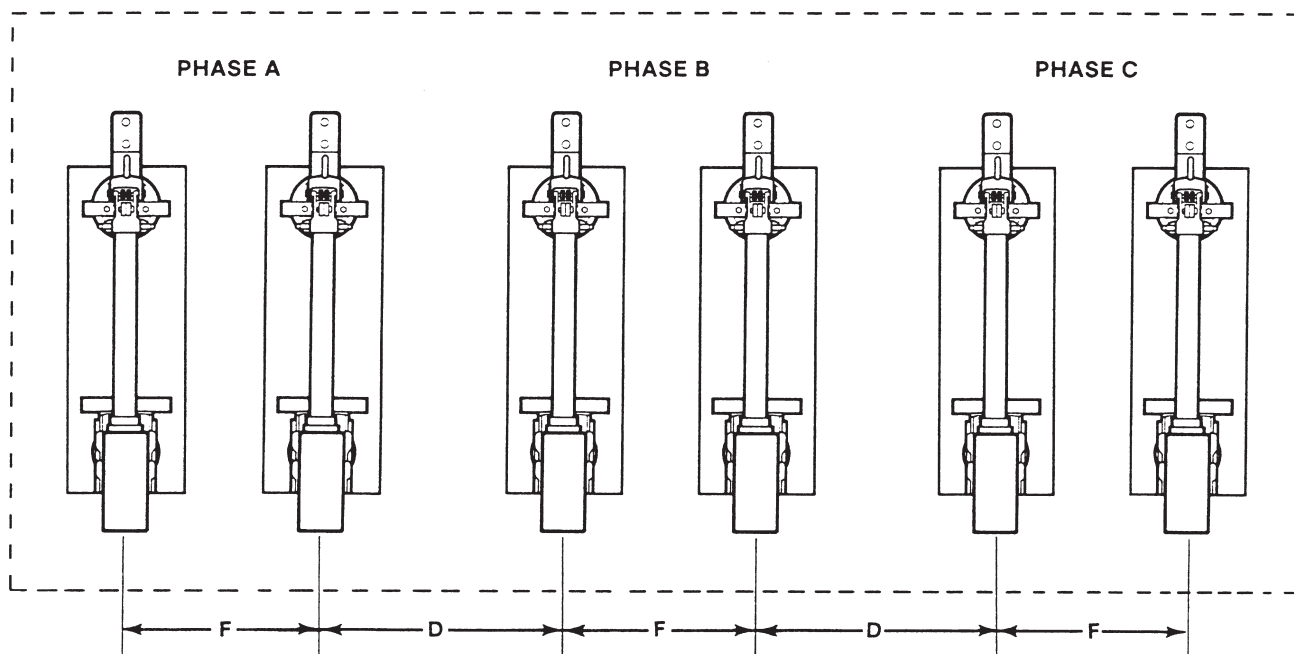


STATION-VERTICAL STYLE



| Rating, kV | | | Spacing—Parallel-Connected Mountings, Inches (mm) ^① | | |
|------------|------|-----|--|------------------|----------|
| | | | F | | D |
| Nom. | Max | BIL | Min. ^② | Max ^③ | |
| 4.8 | 5.5 | 95 | 10 (254) | 16 (406) | 16 (406) |
| 14.4 | 17.0 | 110 | 12 (305) | 18 (457) | 18 (457) |
| 25 | 29 | 150 | 15 (381) | 21 (533) | 22 (559) |

① Refer to Information Bulletin 242-83 for additional spacing recommendations.

② Minimum spacing must be maintained to avoid having live parts in such close proximity as to distort significantly the electric field in the vicinity of the interrupting elements of the fuse.

③ Maximum spacing limitations should be observed. In addition, source- and load-side conductors feeding each pair of parallel fuses should be arranged symmetrically to avoid bus configurations having unequal lengths (and, therefore, unequal impedances).



Supersedes Data Bulletin 242-84 dated 11-6-89

October 28, 2019

© S&C Electric Company 1989-2019, all rights reserved

Information Bulletin 242-84