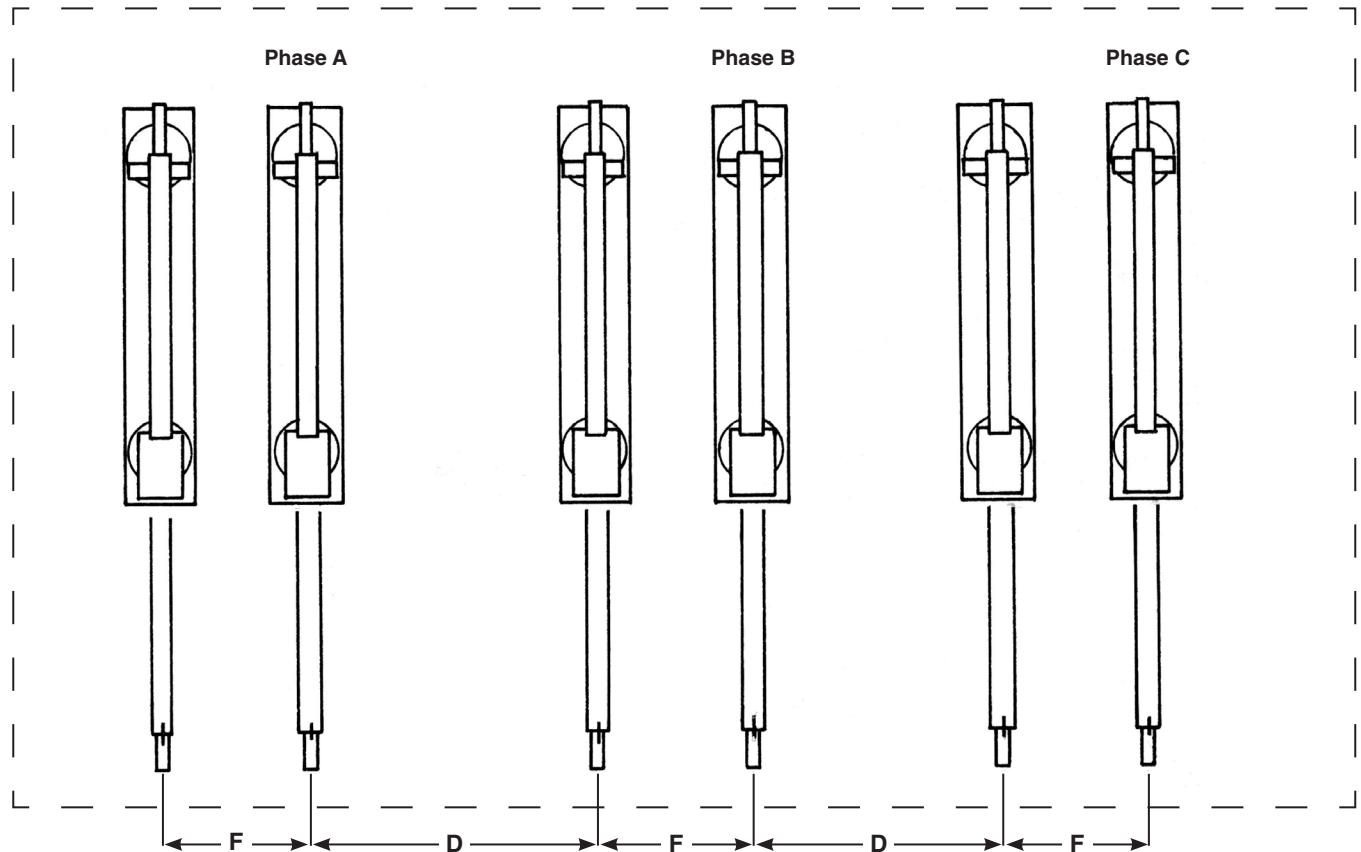


Mounting Styles: All



For Fuse Unit	Rating		Space - Parallel-Connected Mountings, Inches (mm)			
	kV		BIL	F		D ^③
	Nom.	Max		Max ^①	Min ^②	
SMD-2C	34.5	38	200	27 (686)	20 (508)	-
	46	48.3	250	30 (762)	24 ½ (622)	-
SMD-2B	69	72.5	350	41 (1041)	34 ½ (876)	-

① Maximum spacing limitations should be observed and, in addition, source- and load-side conductors feeding each pair of parallel fuses should be arranged symmetrically to avoid bus configurations having unequal lengths (and therefore unequal impedances).

② Minimum spacing must be maintained to avoid having live parts in such close proximity as to distort significantly the electric field in the vicinity of the interrupting elements of the fuse.

③ See Information Bulletin 212-80 for appropriate phase spacing.



Supersedes Data Bulletin 212-82 dated February 6, 1984

August 28, 2017

© S&C Electric Company 1970-2017, all rights reserved

Information Bulletin 212-82